



Coulisse Screens have attained the US Greenguard certification for indoor air quality.



Coulisse Screens have attained the US Greenguard for Children & Schools certification, which makes them safe for the application in schools and health-care environments.



GreenGuard certified products are recognized as criteria for several green building programs, including the US LEEDS Green Building Council.



Coulisse Screens have been Deko-Test Standard 100 certified.



Coulisse Screens have achieved the highest CLASS II Deko-Test standard in the screen industry, indicating they are safe for humans and direct skin contact.



Coulisse Screens have been infused with an anti-microbial protection coating that helps to prevent the growth of stains, odor-causing bacteria, mold and mildew.



Coulisse Screens are free of heavy metal elements and other hazardous substances.



Coulisse Screens have been tested to be 100% Phthalates free.



Coulisse Screens have been tested to be 100% Formaldehyde free.



Coulisse Screens have been tested and proven to emit ZERO VOC (Volatile Organic Compounds) when subjected to weather ability tests.



Coulisse Screens are recyclable.



Coulisse Screens have attained German B1 flammability certifications.



Coulisse Screens have attained US NFPA 701 flammability certifications.



Coulisse Screens comply with the most stringent standards in UV resistance.



Coulisse Screens have a color fastness rating of 8, indicating they optimally keep their color in heavy weather conditions.



Coulisse Screens are suitable for printing (digital printing, screen printing, transfer, paint, adhesive).



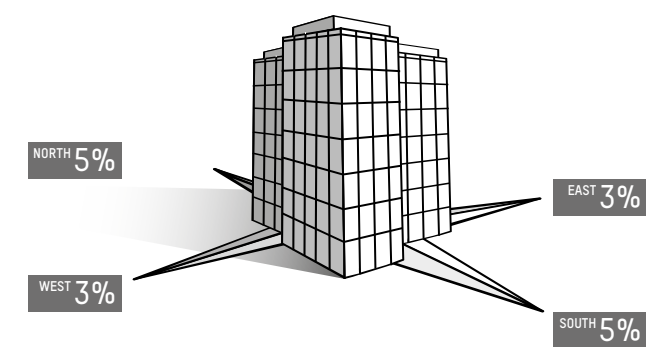
Coulisse Screens come with a 5 year limited warranty on fabric.

4000 SERIES

ONE LOOK, FOUR OPENNESS FACTORS

This unique range of screens offers ten colors, each available in an openness factor of 1, 3, 5 and 10 %. Since each article has the same basket weave, all items in this collection have the exact same optic. By using a mix of openness factors in the same building, an efficient, custom-made interior shading plan can be created, that considers façade orientations, light situations, room functions and the client's wishes in terms of view, privacy and noise reduction. At the same time the identical optic allows for a uniform look throughout the building. The concept furthermore contributes to energy saving and a comfortable indoor climate.

- Suitable for both interior & exterior application
- Available in openness factors 1, 3, 5 and 10 %
- Available in 10 colors, 3 widths, in one basket weave
- Custom-made interior shading plan
- Uniform look throughout the building
- Excellent sound absorption performance
- Available with flammability certifications: B1 and NFPA 701



coulisse

1%

OPENNESS FACTOR



250 CM/98.4 IN

4001

200-250-300 CM / 78.7-98.4-118.1 IN



4005

3%

OPENNESS FACTOR



200-250-300 CM / 78.7-98.4-118.1 IN

4003

250 CM/98.4 IN



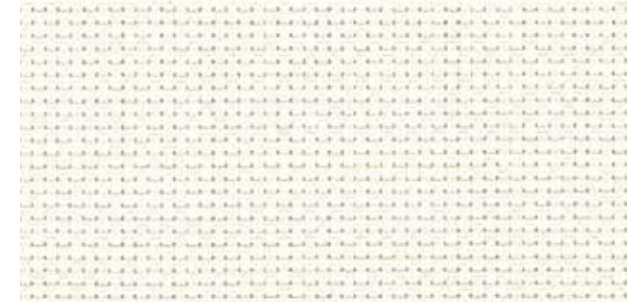
4010

5%

OPENNESS FACTOR

10%

OPENNESS FACTOR



SCR-4005-01 CHALK



SCR-4005-02 CHALK BEIGE CREAM



SCR-4005-11 BEIGE PEARL GREY



SCR-4005-03 CHALK SOFT GREY



SCR-4005-10 CHARCOAL DARK BRONZE



SCR-4005-00 IVORY



SCR-4005-09 GREY SAND



SCR-4005-05 CHARCOAL IRON GREY



SCR-4005-08 SOFT GREY



SCR-4005-06 EBONY

4001/4003 4005/4010

- 4 OPENNESS FACTORS IN THE SAME WEAVE & COLORS
- PVC/POLYESTER
- 2X2 BASKET WEAVE
- 10 COLORS
- INTERIOR & EXTERIOR APPLICATION
- HIGH SOUND ABSORPTION PROPERTIES



Due to the openness factors colors may appear to be different.

Openness factor (%)	1% SCR4001	3% SCR4003	5% SCR4005	10% SCR4010
Weave	basketweave 2x2	basketweave 2x2	basketweave 2x2	basketweave 2x2
Composition	30 % PES, 70 % PVC	30 % PES, 70 % PVC	30 % PES, 70 % PVC	30 % PES, 70 % PVC
Fabric width	250 cm / 98.4 in	200-250-300 cm / 78.7-98.4-118.1 in	200-250-300 cm / 78.7-98.4-118.1 in	250 cm / 98.4 in
Roll length	27.4 m / 29.9 yds	27.4 m / 29.9 yds	27.4 m / 29.9 yds	27.4 m / 29.9 yds
Fabric weight	590 g/m ² (17.04 oz./yd ²)	540 g/m ² (15.93 oz./yd ²)	530 g/m ² (15.63 oz./yd ²)	470 g/m ² (13.88 oz./yd ²)
Fabric thickness	± 0.76 mm / ± 0.029 in	± 0.67 mm / ± 0.026 in	± 0.64 mm / ± 0.025 in	± 0.60 mm / ± 0.023 in
Breaking strength (ISO 14211)	warp 240 daN/5 cm, weft 243 daN/5 cm	warp 240 daN/5 cm, weft 220 daN/5 cm	warp 220 daN/5 cm, weft 200 daN/5 cm	warp 200 daN/5 cm, weft 160 daN/5 cm
Tearing strength (ISO 4674)	≥ 11 daN warp, ≥ 10 daN weft	≥ 11 daN warp, ≥ 10 daN weft	≥ 10 daN warp, ≥ 9 daN weft	≥ 10 daN warp, ≥ 9 daN weft
UV blockage	approximately 99 %	approximately 97 %	approximately 95 %	approximately 90 %
Color fastness (ISO 105: B02)	grade 8 (scale 1-8)	grade 8 (scale 1-8)	grade 8 (scale 1-8)	grade 8 (scale 1-8)
Fire classification	B1 DIN 4102, NFPA 701	B1 DIN 4102, NFPA 701	B1 DIN 4102, NFPA 701	B1 DIN 4102, NFPA 701
Bacterial & Fungi Resistance	BS EN ISO 846 (UK) / US ASTM G21 (Fungi) / US ASTM G22 (Bacteria)	BS EN ISO 846 (UK) / US ASTM G21 (Fungi) / US ASTM G22 (Bacteria)	BS EN ISO 846 (UK) / US ASTM G21 (Fungi) / US ASTM G22 (Bacteria)	BS EN ISO 846 (UK) / US ASTM G21 (Fungi) / US ASTM G22 (Bacteria)

Description	Solar Optical Properties					Shading Coefficient			*Solar Factor EN14501: glass type C			
	Ts	Rs	As	Tv	Tuv	1/8" CL	1/4" CL	1/4" H.A.	gtot ext. class	gtot int. class		
SCR4001-00	6	68	26	6	2	0.27	0.28	0.28	0.08	4	0.33	2
SCR4001-01	7	74	19	6	3	0.20	0.22	0.24	0.07	4	0.31	2
SCR4001-02	5	64	31	5	2	0.33	0.30	0.30	0.07	4	0.35	2
SCR4001-03	4	48	48	4	1	0.40	0.38	0.36	0.07	4	0.39	2
SCR4001-05	0	10	90	1	1	0.62	0.58	0.54	0.09	3	0.52	0
SCR4001-06	0	4	96	0	1	0.68	0.63	0.52	0.09	3	0.55	0
SCR4001-08	4	36	60	0	2	0.48	0.45	0.43	0.08	4	0.46	1
SCR4001-09	3	53	44	2	1	0.37	0.35	0.32	0.08	4	0.38	2
SCR4001-10	0	14	86	1	1	0.60	0.56	0.53	0.09	3	0.54	0
SCR4001-11	1	43	56	1	2	0.38	0.38	0.35	0.08	4	0.49	1

Description	Solar Optical Properties					Shading Coefficient			*Solar Factor EN14501: glass type C			
	Ts	Rs	As	Tv	Tuv	1/8" CL	1/4" CL	1/4" H.A.	gtot ext. class	gtot int. class		
SCR4003-00	9	74	17	8	4	0.34	0.33	0.30	0.09	4	0.34	2
SCR4003-01	10	72	18	7	4	0.30	0.29	0.29	0.08	4	0.32	2
SCR4003-02	8	60	32	7	4	0.36	0.34	0.32	0.08	4	0.36	2
SCR4003-03	7	45	48	6	4	0.43	0.40	0.38	0.08	4	0.40	1
SCR4003-05	4	12	84	5	3	0.56	0.53	0.50	0.10	3	0.53	0
SCR4003-06	3	2	95	3	3	0.72	0.71	0.51	0.10	3	0.56	0
SCR4003-08	9	49	42	8	4	0.41	0.38	0.37	0.09	4	0.47	1
SCR4003-09	8	47	45	7	4	0.48	0.49	0.43	0.09	4	0.39	2
SCR4003-10	3	6	93	4	3	0.69	0.56	0.53	0.10	3	0.55	0
SCR4003-11	5	39	56	5	4	0.47	0.43	0.44	0.09	4	0.50	0

Description	Solar Optical Properties					Shading Coefficient			*Solar Factor EN14501: glass type C			
	Ts	Rs	As	Tv	Tuv	1/8" CL	1/4" CL	1/4" H.A.	gtot ext. class	gtot int. class		
SCR4005-00	12	72	16	12	6	0.28	0.29	0.29	0.11	3	0.35	1
SCR4005-01	14	74	12	13	7	0.25	0.26	0.28	0.10	3	0.33	2
SCR4005-02	10	54	36	9	6	0.38	0.37	0.34	0.11	3	0.36	1
SCR4005-03	8	48	44	8	6	0.42	0.41	0.37	0.10	3	0.41	1
SCR4005-05	7	13	80	8	5	0.64	0.47	0.40	0.12	3	0.54	0
SCR4005-06	6	5	89	7	5	0.72	0.70	0.50	0.12	3	0.56	0
SCR4005-08	15	51	34	14	6	0.41	0.37	0.39	0.11	3	0.48	1
SCR4005-09	10	38	52	9	5	0.49	0.46	0.40	0.11	3	0.40	1
SCR4005-10	9	7	84	8	5	0.68	0.54	0.47	0.12	3	0.55	0
SCR4005-11	12	43	45	12	6	0.48	0.45	0.42	0.11	3	0.55	0

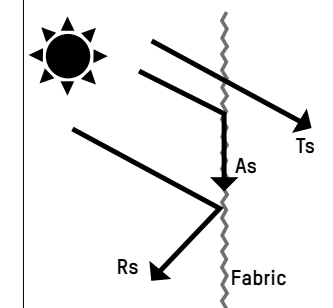
Description	Solar Optical Properties					Shading Coefficient			*Solar Factor EN14501: glass type C			
	Ts	Rs	As	Tv	Tuv	1/8" CL	1/4" CL	1/4" H.A.	gtot ext. class	gtot int. class		
SCR4010-00	22	70	8	23	11	0.34	0.33	0.30	0.12	3	0.37	1
SCR4010-01	24	71	5	24	12	0.29	0.26	0.25	0.11	3	0.34	2
SCR4010-02	17	64	19	17	9	0.38	0.35	0.32	0.12	3	0.37	1
SCR4010-03	12	56	32	12	9	0.45	0.44	0.42	0.11	3	0.42	1
SCR4010-05	11	15	74	10	10	0.72	0.68	0.53	0.13	3	0.55	0
SCR4010-06	10	6	84	9	10	0.75	0.70	0.56	0.13	3	0.57	0
SCR4010-08	23	50	27	22	9	0.56	0.53	0.46	0.12	3	0.49	1
SCR4010-09	14	53	33	13	9	0.45	0.43	0.37	0.12	3	0.41	1
SCR4010-10	13	11	76	12	10	0.69	0.67	0.50	0.13	3	0.56	0
SCR4010-11	15	48	37	15	11	0.42	0.42	0.37	0.12	3	0.56	0

Performance evaluations conducted by Matrix, Inc., Mesa, Arizona.

Ts = Solar Transmittance
Rs = Solar Reflectance
As = Solar Absorptance
Tv = Visual Transmittance
Tuv = UV Transmittance

1/8 CL = 1/8" Clear Glass
1/4 CL = 1/4" Clear Glass
1/4 HA = 1/4" Heat Absorbing Glass

The solar optical properties are used to calculate the shading coefficient. The shading coefficient represents the percentage of solar heat gain that is transmitted to the interior through the glass and shading system. Darker colors provide maximum glare reduction and visibility.



*Measurements according to EN410; Classification according to EN 14501: Blinds and Shutters - Thermal and visual comfort

gtot ext = Solar factor + Solar shading exterior application
gtot int = Solar factor + Solar shading interior application
Class = Classification from 0 to 4 where 0 is very little effect and 4 is very good effect

- Roller Shades
- Panel Tracks
- Roman Shades
- INTERIOR
EXTERIOR

All values are only average values and are subject to changes within acceptable tolerances. Technical data are subject to modification.

SCREEN ESSENTIAL

4001/4003/4005/4010

1%
OPENNESS FACTOR

3%
OPENNESS FACTOR

5%
OPENNESS FACTOR

10%
OPENNESS FACTOR



coulisse

Coulisse B.V. Vonderweg 48 7468 DC Enter The Netherlands
T +31 547 85 55 55 F +31 547 85 55 50 E info@coulisse.com

Coulisse Inc. 501 Brickell Key Drive
STE 507 Miami, FL 33131 United States of America

www.coulisse.com

SK-1088-10-2014